

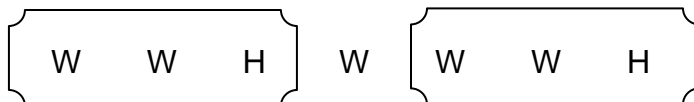
Building Scales

If you do not know your scales by memory (which I encourage you to do), please use the Whole Step, Half Step pattern to help you build a scale.

MAJOR SCALES

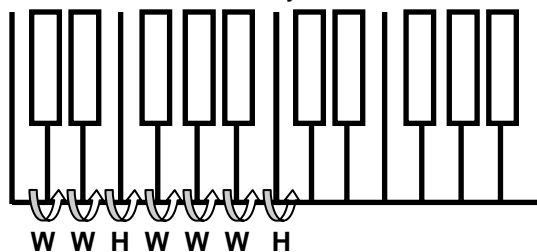
The Major scale W H step pattern is: W W H W W W H

You can remember this by thinking W W H and another W W H with a W step in between.



OR

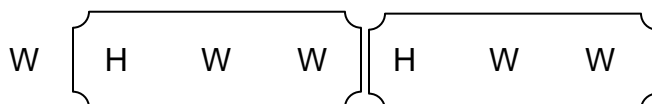
Write the W H steps based on the C Major scale.



NATURAL MINOR SCALES

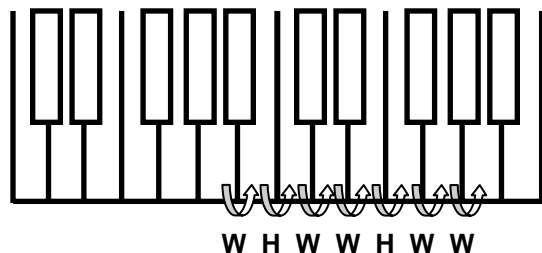
The Natural minor scale W H step pattern is: W H W W H W W

You can remember this by thinking of a W step at the beginning followed by H W W, H W W



OR

Write the W H steps based on the A minor scale:

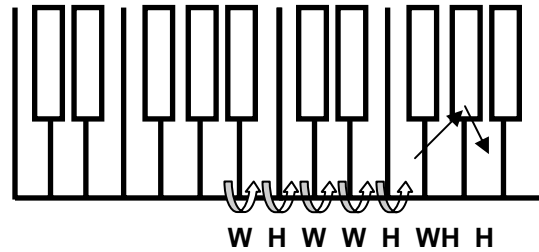


HARMONIC MINOR SCALES

The Harmonic minor scale W H step pattern is:

W H W W H HW H

Write the W H steps based on the A Harmonic minor scale:



BUILDING A SCALE on the STAFF

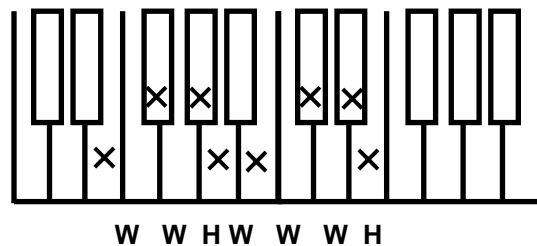
1. Write in the notes without accidentals.
2. Write in the accidentals

EXAMPLE: E Major

1. Write in the notes without accidentals.



2. Write in the accidentals based on the W H step pattern.

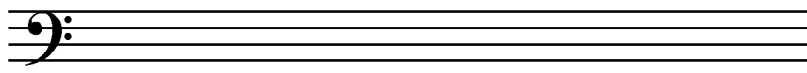


Building Scales

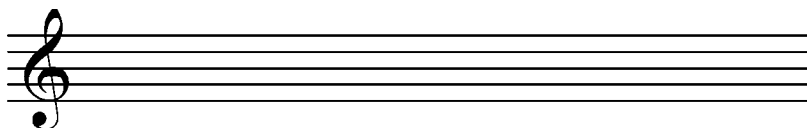
NAME: _____

Build the following scales on the staff.

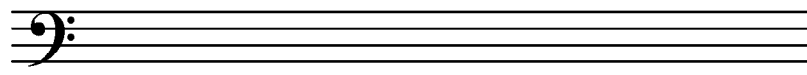
1. Write in the notes without accidentals.
2. Look at the keyboard to determine what the pattern of W and H steps are.
3. Write in the accidentals.



D Major



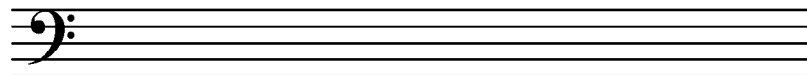
G Natural Minor



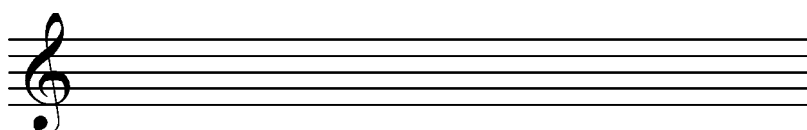
A Major



C Harmonic Minor



B Major



B Natural Minor

